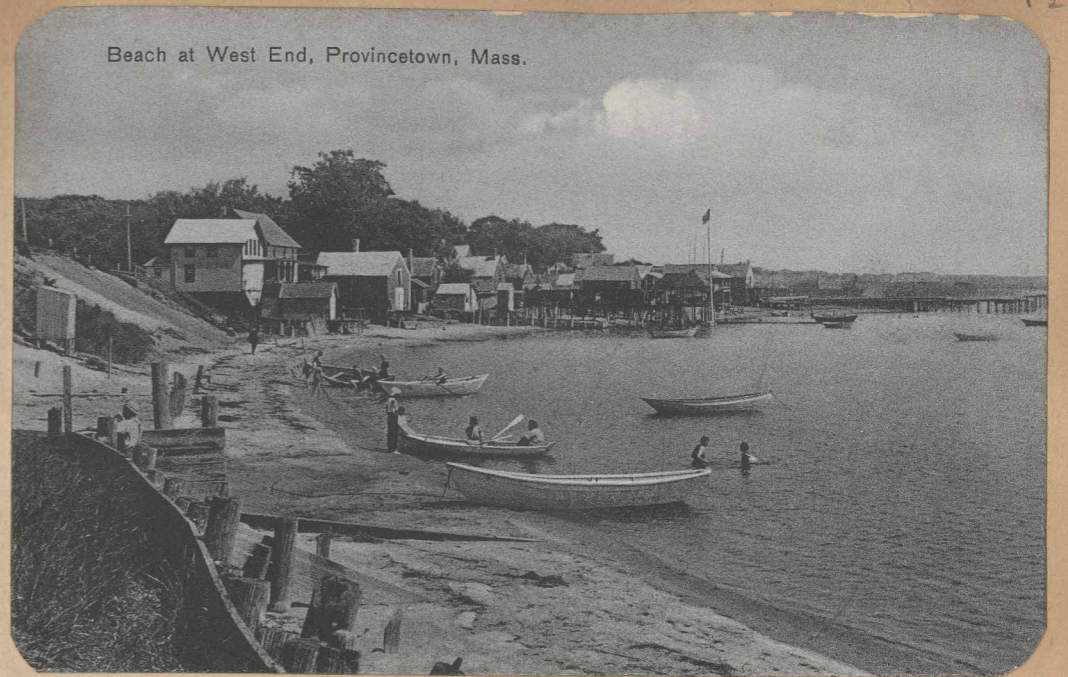
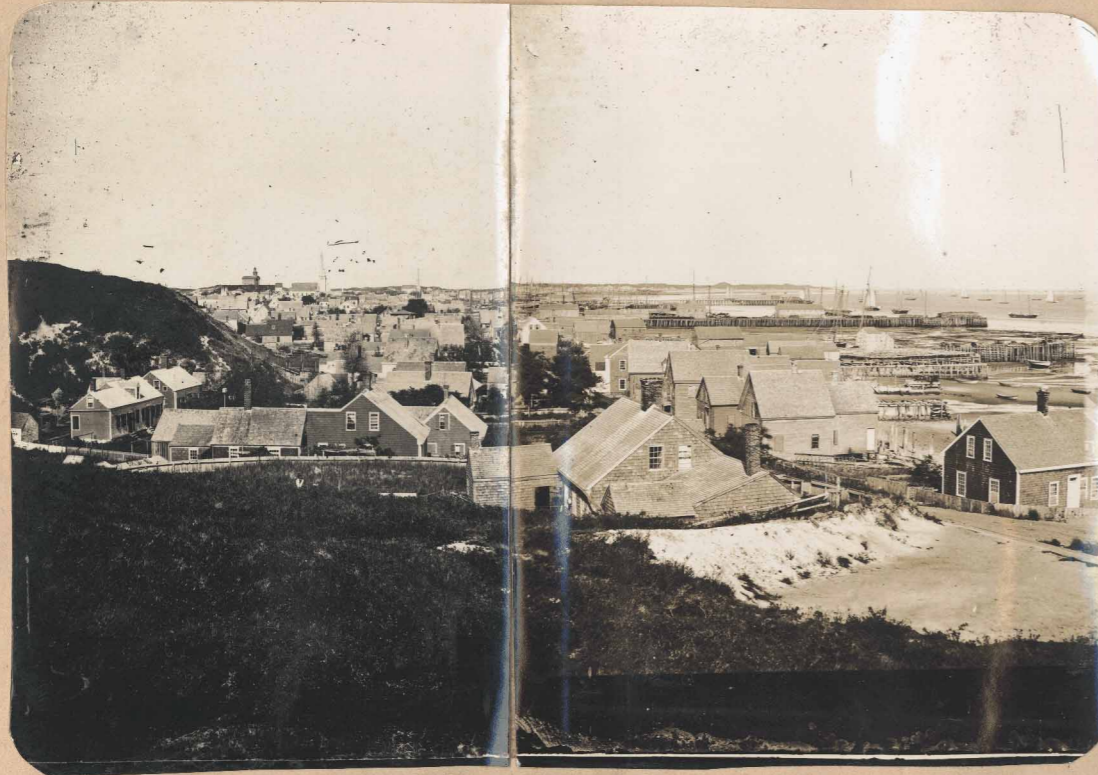


West End Harbor & Beach looking East.

From the top of Gull Hill facing East. - 1890



Same view about 1910. Note pier again, by flagpole.



An old stereoscopic view of the town from Higgin's Bungalow in the 1860's. Picture taken off by John R. Smith. Note the old Town Hall on High Pole Hill, Centenary Church to its right, and then the Center Methodist Church. Mount Gilboa in the background, with Mount Ararat to its right which used to be the highest point in Provincetown until a sandpit located there and most of the hill was carried away in freight cars to be sold; now Mount Gilboa claims the title. Gull Hill lower right. Note vessel masts.



About 1890. Note the two Churches are together in center. Western Schoolhouse at left of Churches (cupola). Standpipe at left.