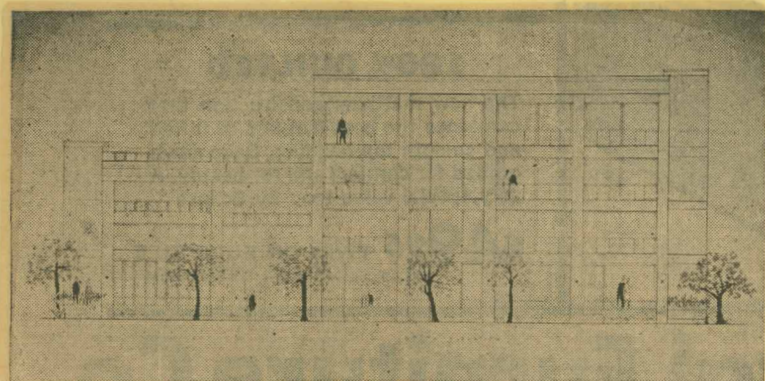


- September 1, 1966 -

THE EAST END COLD STORAGE PLANT, substantially damaged by fire last Winter and formerly owned by Gary Ross of New York City, has been sold to Charles W. Duffy of Edge Hill Road, Waltham, and will be rebuilt as an apartment house at an estimated cost of three-quarters of a million dollars. The sale was made by Joseph H. Beaudry of Cape End Realty, Truro and Provincetown, which will be exclusive agents for Mr. Duffy, handling all information and brochures for next season's rentals. Everything except the main structure will be torn down in the extensive reconstruction, planned to begin after Labor Day. Plans call for completion by May 1, 1967. According to Mr. Duffy, a number of local men will be employed on the project.



This is the architect's drawing of the apartment house planned to replace the old East End Cold Storage plant recently purchased by Charles W. Duffy of Waltham. Plans call for the main structure to be retained with extensive reconstruction to be started immediately for completion by next May.

- September 8, 1966 -

- April 20, 1967 -

### Asks Inquiry Into Freezer Plant

The Provincetown Civic Association at its annual meeting voted to ask the Department of Public Safety to make "diligent inquiry" into the proposed conversion of the abandoned freezer plant in the East End into a 50-unit apartment house.

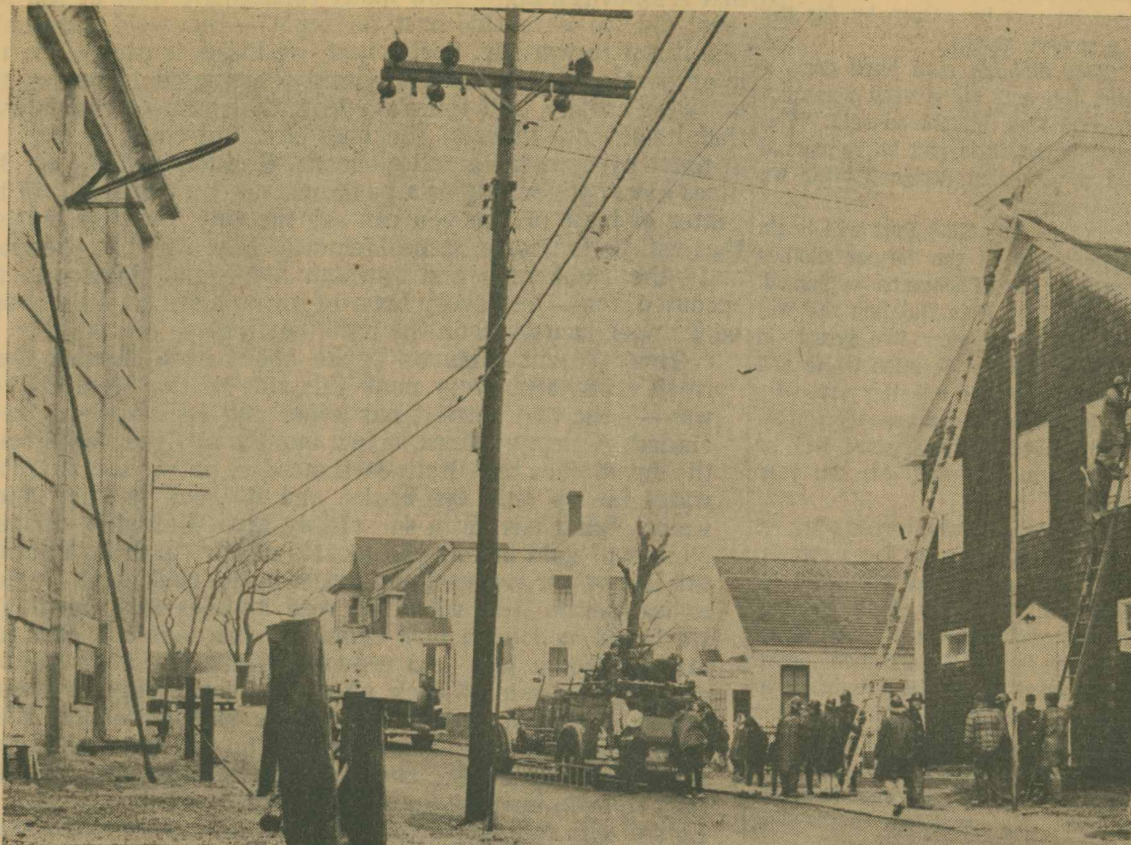
Members said they hoped to be assured that the fire department has equipment and ladders of sufficient length to rescue top-floor dwellers should fire ever threaten the building.

They also expressed concern that water pressure be sufficient during the entire year and particularly in Summer for hose lines to reach and be effective at top levels of the building.

PROVINCETOWN, MASS.

THURSDAY, APRIL 27, 1967

## Fire Department Ladders In Practice Drill



STAFF PHOTO BY PAUL KOCH

The black line, with the arrow from the cold storage plant was pointing to it in the photograph used in the practice drill to avoid above, represents the maximum trespassing by the fire department height — three stories and a half — on premises of the old cold storage that the longest ladders in the plant.

The Provincetown Fire Department are capable of reaching.

With their maximum reach of three-and-a-half stories, the ladders are still an entire story-and-a-half short of the five-story height of the former Consolidated Cold Storage plant in the East End, which is to be converted into an apartment house accommodating an estimated 52 units.

Recently in a practice drill using its entire personnel, the fire department put out its maximum effort to reach the highest point possible from the ground under fire-fighting conditions.

The black line and arrow above, drawn against the front of the cold storage building, show how high the ladders will go. The building on the opposite side of Commercial Street

The fire department's longest ladders are two 45-foot ladders (opening up to some 38 feet of usable length) and two 28-foot ladders. That's it.

"To use taller ladders that can be operated manually, you require considerably more room to maneuver and the ladders become extremely cumbersome," John Alexander of the Board of Fire Engineers, points out. High tension wires and other problems in a narrow street where buildings are close together make their use "impracticable," he says.

As for an aerial ladder or a "snorkle" (a high jackknife crane with a man posted at the top of it), "You couldn't get either one through the narrow streets of Provincetown," says Fire Chief James Roderick.

## Old Freezer Plant, Pilgrim Club Summer Noise, Occupy Selectmen

Town Manager Robert Hancock and the Selectmen, who have requested Charles W. Duffy of Milton, new owner of the former Consolidated Cold Storage plant, to demolish in the interests of safety the burned wooden structure at the rear of the five-story plant, have put the matter in the hands of Town Counsel John C. Snow, the Town Manager said at a press conference Tuesday.

The plant, gutted by fire, will be converted into a large apartment house, the new owner has announced. Delay in demolition and reconstruction, however, has sparked complaints by East End residents that the present condition constitutes a hazard. They have also objected to effects of its alleged unsightliness on the East End area. The plant is on Commercial Street opposite Howland Street.

lips would still have to appear before the Zoning Board of Appeals for a variance to erect an off-premise sign. At his press conference Tuesday the Town Manager said the Selectmen had granted a license for operation of the new campsite, located he said, in the rear of the former Galeforce Farm, the license to health department inspection approval.