



W. H. SMITH, PHOTO. * PROVINCETOWN. 50

Facing west from Town Hill. - About 1880 - Universalist Church, left; Centenary Church, right. Marine Hall at the bottom left. Note masts at the several wharves (see next picture on right)

1577

003-041

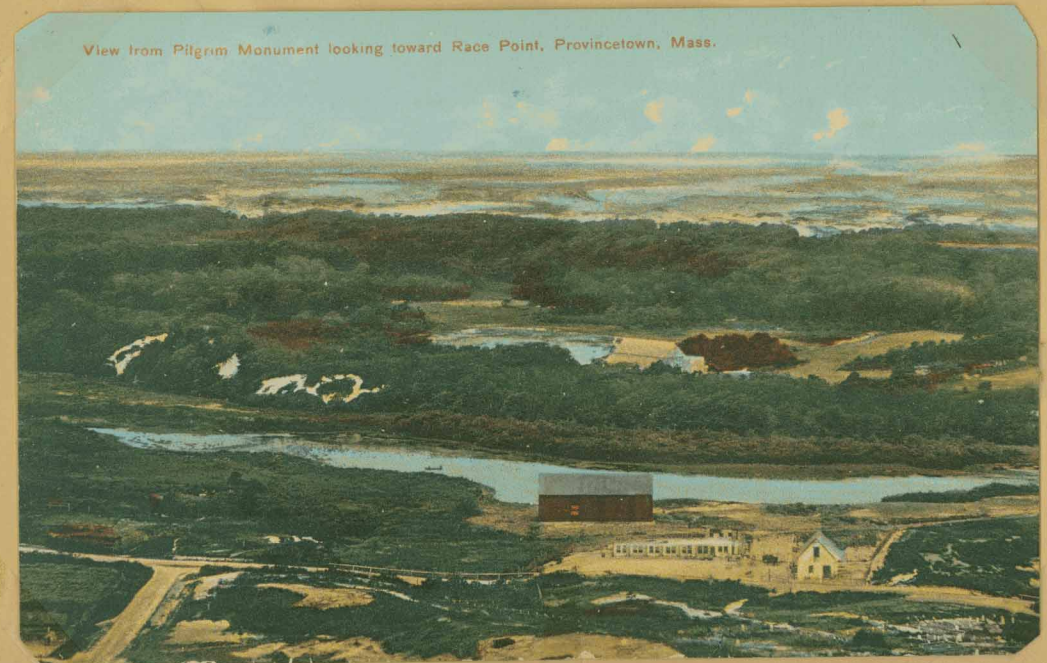


1954 version of picture on the left. Towne House (or the old Central House) on left. Universalist Church with the Post Office on its right. The Marine Hall in the foreground. Gifford House big white house on right of picture. Wood End Coast Guard at end of West End Breakwater. Wharves: Colonial Cold Storage, left; Cape Cod Cold Storage, right. Taken from Top of the Monument.



THE HARBOR, PROVINCETOWN, MASS.

The Atlantic Fleet - - 1910



View from Pilgrim Monument looking toward Race Point, Provincetown, Mass.

Facing Race Point From the Monument - 1912