

to view. Relic hunters soon carried away nearly all of the wreckage that could be obtained, and the shifting sands have again entombed what remains of the famous old frigate.

Another historic wreck was that of the pirate ship *Widdah*, which was lost near the site of the Cahoon's Hollow Life-Saving Station in 1718. The ship was commanded by Captain Bellamy, and carried twenty-three guns and a crew of one hundred and thirty men. Captain Bellamy had captured seven vessels off the shores of Cape Cod, and on one of them had placed seven of his crew. The captain of the captured ship ran his vessel close to the shore, and the seven pirates were taken prisoners. Later six of them were executed in Boston.



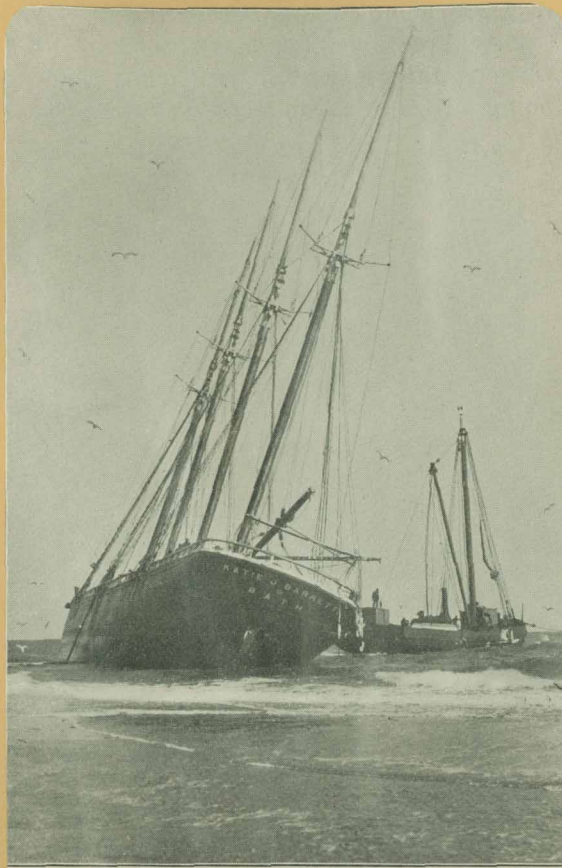
A BAD WRECK.

The *Widdah* soon after was driven ashore during a gale, and all hands, save an Englishman and an Indian, were lost.

A scene of awful terror occurred when the *Josephus*, a British ship, was wrecked on Peaked Hill Bars in the year 1842. She had a cargo of iron rails. Her crew had been driven to the rigging as soon as the vessel struck, and one after another they were seen to fall into the raging sea. Those who had gathered on the shore could hear the despairing cries of the imperiled crew, but were powerless to aid them. At last two of the spectators, Daniel Cassidy and Jonathan Collins, procured a dory, and against the earnest pleadings of their friends, and in the almost certain assurance that they were going to their death, pushed off from the beach, saying as a last farewell, "We can't stand this any longer; we are going to try and rescue those poor fellows if it cost us our lives." Half-way out to the wreck the two heroes successfully battled with the sea, then a giant comber, catching their frail boat, carried it along and buried it under tons of tumbling water. The gallant men were seen to rise and struggle desperately to reach the overturned boat, but perished in the attempt. The men remaining in the rigging of the *Josephus* were soon after swept to death by the monstrous waves that tore the ship to pieces.

In 1848 the brig *Cactus* was lost on the bars along the back of the Cape.

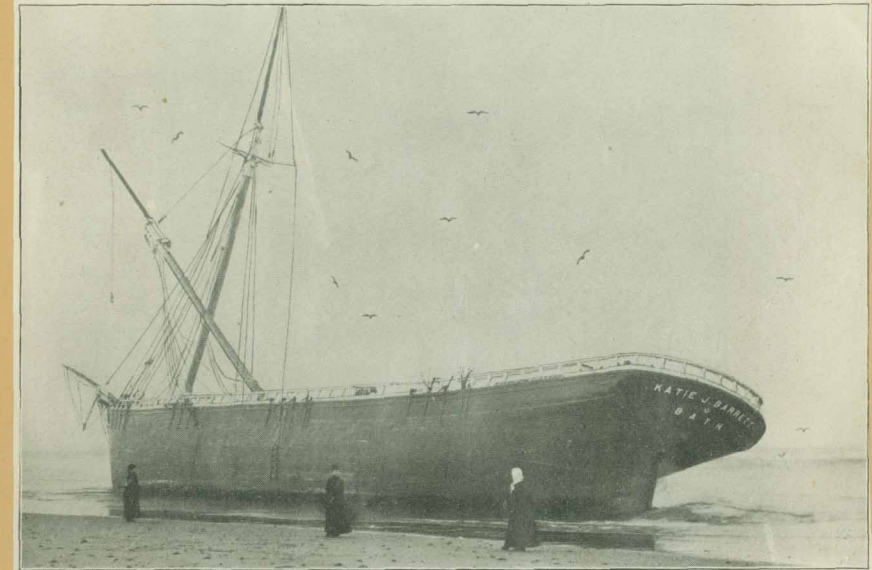
Along the shore near the Cahoon's Hollow Station the immigrant ship *Franklin* was deliberately run ashore in 1849, and many of her poor, helpless passengers perished in the disaster. This was one of



WRECKERS AT WORK ON KATIE J. BARRETT.

the most appalling disasters that ever occurred on Cape Cod. Speedy retribution came to the officers of the ship for their terrible crime, the captain and nearly all the others losing their own lives in the wreck. The late Capt. Benjamin S. Rich, afterwards of the United States Life-Saving Service, was the first to discover the wreck, and also found a box containing some papers that subsequently proved that the disaster was intentional.

The year 1853 was a memorable one in the history of Cape Cod, there being twenty-three appalling disasters along its shore during that period. Among the vessels lost were many ships and brigs well known in shipping circles in Boston and on Cape Cod. The weather



KATIE J. BARRETT BREAKING UP.

was bitter cold and violent storms swept the coast when most of the vessels were lost, so that nothing could be done to assist the imperiled crews, and those who did reach the shore perished from exposure on the desolate uplands and beaches.

In 1866 the *White Squall*, built for a blockade runner, while on her way home from China, struck on the bars along the back of the Cape and became a total loss.

The wreck of the *Aurora* is known to Cape Codders as the "Palm Oil Wreck." The vessel was loaded with palm oil from the west coast of Africa. She struck on the bars off the back of the Cape, and was a total loss.

Another terrible disaster was the wreck of the schooner *Clara Belle*, coal laden, which stranded on the bars off High Head Station, on the night of March 6, 1872, at the height of a fearful blizzard. Captain Amesbury and crew of six men attempted to reach the shore in their boat. The craft had gone but a few yards when she was overturned, throwing the men into the sea. John Silva was the only member of the crew that reached the shore. He found himself alone on a frozen beach with the mercury below zero. He wandered about during the night trying to find some place of shelter, and was found the next morning by a farmer standing dazed, barefooted, and helpless in the highway three miles from the scene of the wreck. His feet and hands were frozen, and it was a long time before he recovered from the