



*For A Long
and Delightful
Weekend*

Provincetown Inn

Out at the Lovely West End of Provincetown
Where The Pilgrims First Landed

Our Dining Room Is Open Daily
Serving

Breakfast Luncheon Dinner

Also Open
Our Delightful Shore Cocktail Lounge
With Television

Chester Peck, mgr.

THE BOSTON SUNDAY HERALD, JUNE 23, 1957

Provincetown Inn

New Features Added For the 1957 Season

The Provincetown Inn, located on the tip of Cape Cod has opened for the 1957 season, and according to general manager Chester Peck the Inn will play host to many vacationers this summer. Many new innovations have been added at the Inn including a large parking area and patio.

The "bossman," as he is known, is energetic Chester Peck, Jr., who, with his lovely wife, Jean, has supervised the adding of more rooms and the installing of ultra-modern facilities.

Peck who started as a youngster in the hotel business at Naples, Me., has built up the Provincetown Inn to the point now that screen and stage personalities make it a favorite stopping place.

But that's not all. Hundreds of tourists flock here to the inn because of its historic location, its modern conveniences, and accommodations to serve young and old.

The inn, located on the tip of Cape Cod at a spot where the Pilgrims made the first landing in America, was taken over by Peck in 1935.

At that time there were only 28 rooms and a small dining

room. But it was the beginning of a "success" story for Mr. Peck and his associates.

Today the inn has a 500-foot private beach of white sand, which overlooks Provincetown Harbor where yachting and fishing are daily practices.

Its modern cocktail lounge and dining room comfortably inside the inn and are both completely air-conditioned.

This enables vacationers to sit comfortably inside the Inn and view through recently added picture windows the goings on at the beach and harbor.

As to the menu, Peck believes good food is one of the underlying

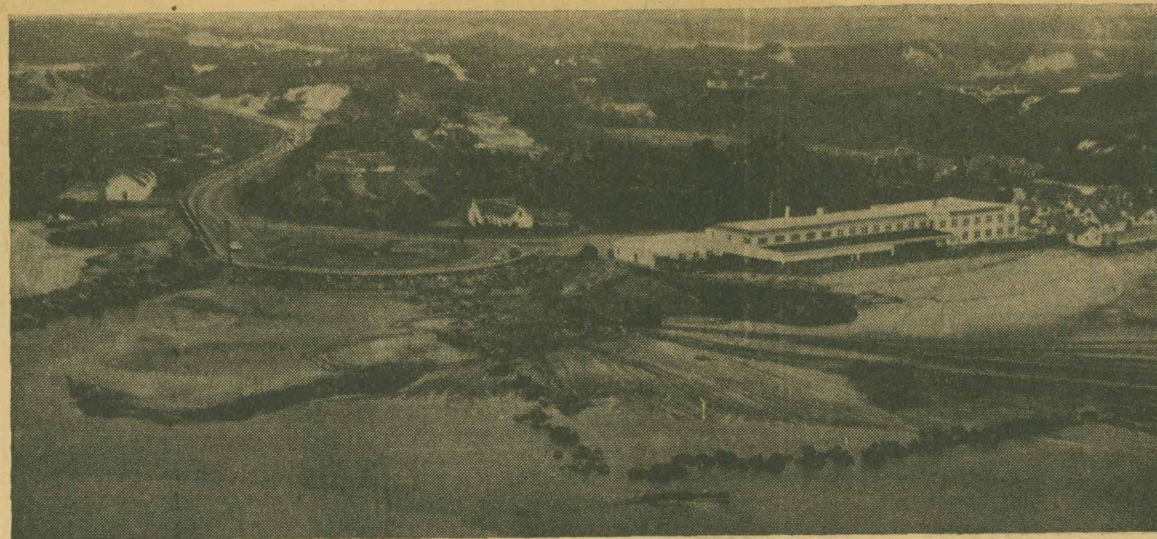
reasons why vacationers return to the inn year after year.

It contains all types of sea foods from broiled live lobsters to scallops and clams, plus steaks and other meats favored by tourists.

PROVINCETOWN, MASS.

THURSDAY, FEBRUARY 28, 1957

Four Acres New Land Being Created For Provincetown Inn



John D. Bell Airview

ABOUT FOUR ACRES of new land are being created along the side and front of the western wing of the Provincetown Inn to take care of the ever increasing demand for parking space by patrons.

Now taking shape is the largest private parking development ever undertaken in this vicinity as Contractor Joseph Perry of New Bedford speeds the building of the large, sea-front parking area. Shown above are the huge rocks which roughly mark the outlines of the great expanse. Fill sand is being brought from the high

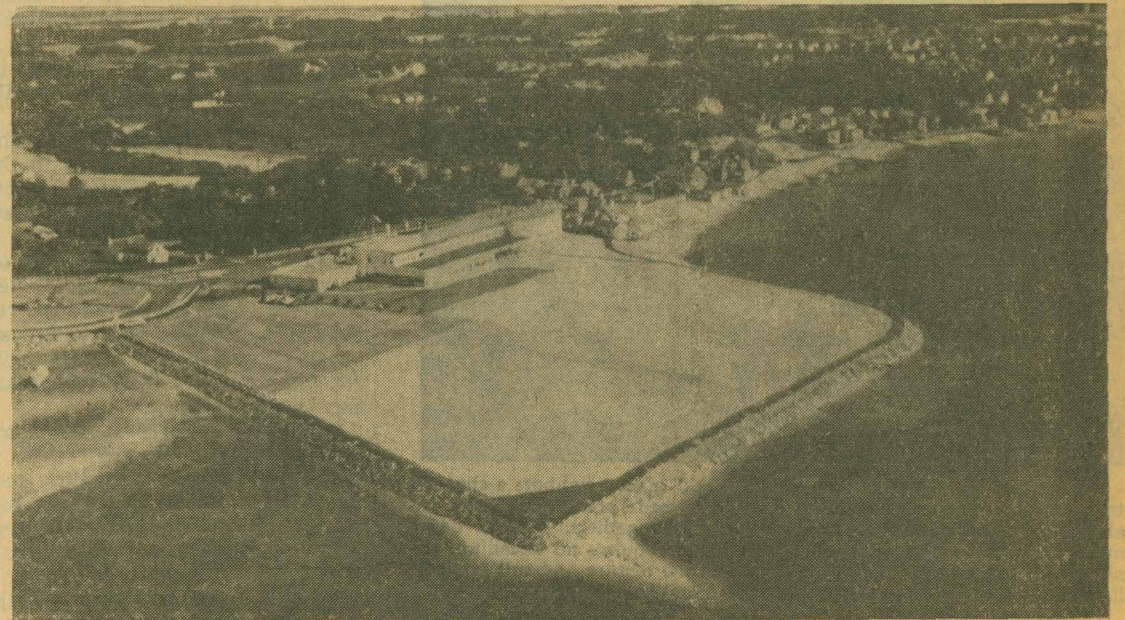
06841 1240
dune at the corner of Bradford Street Extension and New Beach Highway (large white spot in upper left hand corner) opposite the Moors Club. Crowell Brothers of Dennis have the sub-contract for moving the fill. It is estimated that some fifty thousand cubic yards of fill will be required for the development.

For about a year, until the fill has become thoroughly settled, the area will have a surface and then it will be covered with asphalt. Outer edges of the area will be protected against erosion by heavy riprap embankments.

PROVINCETOWN, MASS.

THURSDAY, NOVEMBER 28, 1957

Inn To Step Into Front Rank Among New England Resorts



Provincetown-Boston Airline Photo

On fill moved last winter from a massive dune at Bradford Street Extension and New Beach Highway was built this broad expanse of new shore fronting Provincetown Inn. By Spring more than 30 motel units will be ready for visitors, and the area will be equipped with two swimming pools and facilities for the enjoyment of a variety of outdoor recreational activities for patrons of the Inn.