

009-027

1114

1955 - April 28

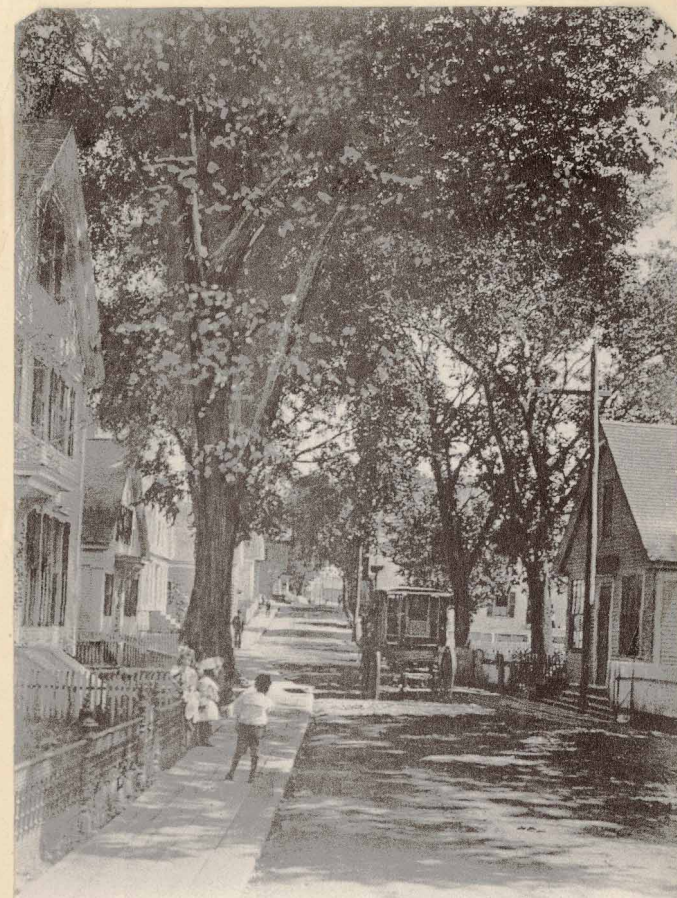
The Town of Provincetown will receive proposals at the office of the Town Manager until 10:00 A. M., May 5, 1955, for the demolishing of the Center and Western School buildings at Provincetown, Mass. Contract forms and specifications may be obtained at the office of the Town Manager. The Town reserves the right to accept or reject any or all bids received.

April 21-28

(See notes around the)
Center School

THE OLD NOOSE WALL

Chip Hill, so called situated in the west end of town in the year 1805 was graded down some 25 feet and leveled, for the purpose of building salt works. The works occupied this spot until 1853 when the business was abandoned and the land sold for building lots. While digging the cellar for a home, after reaching a depth of five feet a wall of masonry was found about three feet high and two feet wide at the base. These stones were laid in shell lime mortar, and after clearing off a space from the bottom of the wall, they found a hard earthen floor composed of peat, clay and fine white sand, hammered and pounded together making a hard level floor. Further digging disclosed the remains of a fireplace, and by it some decomposed bones of sea fowl. The theory has been advanced by scientists that this was the camping place of Thorwald and his crew of Vikings who visited here in 1004 and used while repairing his ship. The stones unlike any on the Cape, or in this country, were probably the ballast taken from the ship to enable them to draw further up on the shore and were built in this manner as a kind of Fort or defense against the savages. Covered over with the vessels sails to protect the crew from the weather, it made a snug haven. Sand was used for ballast being easier to handle and the stones were left behind, to be buried up some 30 feet by the shifting sands during the 800 years that had passed.



Copyright 1905 by the Rotograph Co.
6830 Commercial St., Provincetown, Mass.

Facing East from Lancy's
Corner - 1905 - Note
old plank walk