

From: J. W. Dalton's  
The Life Savers of Cape Cod. - 1902

**WOOD END STATION.**

This station is one of the new type of life-saving stations, with commodious quarters for the keeper and crew, large boat room and lookout. It was built in 1896, and manned in 1897. The late Capt. Isaac G. Fisher, who was keeper of the Peaked Hill Bars Station at the time, was placed in charge of the station and a picked crew of surfmen. Captain Fisher continued as keeper until ill-health caused him to resign from the service. Capt. William Sparrow, now keeper of the Point Allerton Station, who was No. 1 man under Captain Fisher, acted as temporary keeper until Captain Bickers was placed in charge. The station is located on the narrow strip of beach at the tip end of Cape Cod, Provincetown, one-eighth of a mile east from the Wood End lighthouse. Its approximate position as obtained from the latest coast survey charts is latitude north 42° 01' 15", longitude west 70° 11' 30". From Provincetown the distance to the station over the sand dunes and along the beach is about three and one-half miles. Across the head of the harbor, a way that is accessible when the tide

has ebbed, the distance is much shorter. The station is supplied with two five-oared surf-boats of the Race Point model, two beach carts, with guns, breeches-buoys, etc., and one life-car. The patrol from this station extends three and three-quarters miles north, and two and one-quarter miles south. This is the only station on Cape Cod where the surfmen do not meet and exchange checks with the surfmen from other stations, time clocks being employed to record the performance of duty of the patrol.

No total wrecks have occurred within the province of this station since Captain Bickers has been in command, and no persons have been taken ashore by the crew either in the surf-boat or breeches-

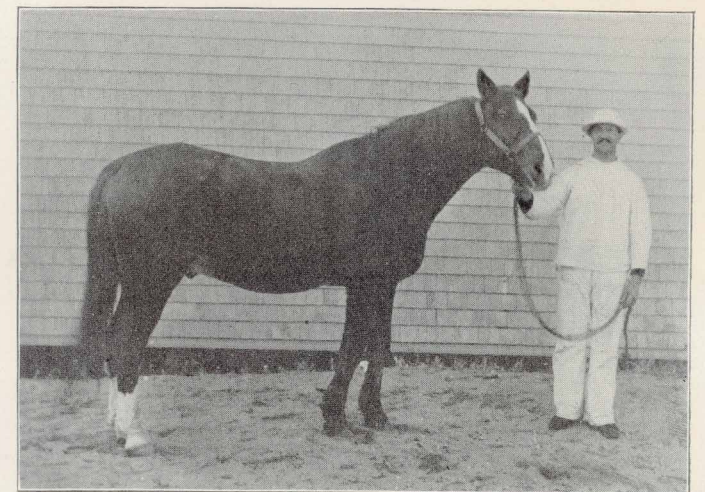


Uncle Bert in the (Albert Burch) Watchtower  
WOOD END STATION.

buoy, although a large number of vessels have met with disaster near there. The following vessels have been assisted and floated by Captain Bickers and crew: the yawl *Adventurer*, the barge *Paxnos*, and the schooners *Clara*, *Zephyr*, *Caviar*, *Manomet*, *Joseph I. Johnson*, *St. Bernard*, *Marjorie Brown*, *Gladstone*, and *Lewis H. Giles*. Captain Bickers and his crew also assisted in the rescue of the two men, members of the crew of the schooner *Two Forty*, who had been adrift in an open boat for fourteen hours.

"Tom," the pet cat at the Wood End Station, while not being able to aid in the work of life saving, often goes out with the surfmen on their lonely patrol along the beaches to keep them company. "Tom" knows every foot of the beaches and seems to delight in going out with the surfmen, whether the weather is fair or stormy. "Tom" often meets the surfmen half-way along the beach as they are returning from their patrol, running along ahead of the men as if to show them the way to the station. "Tom" is the pet of the crew and is well taken care of by them.

"Jim," the horse which is at the Wood End Station, is owned by Captain Bickers, the keeper. He was raised on Cape Cod, and has been connected with the station for one year or since Captain Bickers assumed charge of the station. "Jim" is an intelligent animal, and has upon more than one occasion been of valuable service to the crew, by



JIM, THE HORSE KEPT AT WOOD END STATION.

hauling apparatus to scenes of disaster. "Jim" knows when bad weather prevails, and is ever ready to do his share in the work of saving life or property.

**CAPT. GEORGE H. BICKERS.**

Capt. George H. Bickers, keeper of the Wood End Life-Saving Station, was born in Charlestown, Mass., in 1858. He has been in the life-saving service for eleven years, ten as a surfman at Race Point and one as keeper of the Wood End Station. After leaving school, when a young boy, Captain Bickers shipped before the mast on a